

New Business Item 20-12 Revised

Introduced November 13, 2020

Approved November 13, 2020

Reintroduced November 18, 2022

Approved November 18, 2022

TITLE: Consideration of the University of Hawaii at Manoa's Letter of Intent to Plan a New Programs in STEM and STEMS²

The Hawaii Teacher Standards Board accepts the revised attached Letter of Intent from the College of Education at the University of Hawaii at Manoa to plan a new program in STEM ~~and STEMS²~~.

The program's plans will address initial licensure for the following license fields:

- ~~The Master of Education in Curriculum Studies STEMS² to offer the following license fields as an option to add these fields to an existing Hawaii license:~~
 - ~~STEM K-6~~
 - ~~STEM 6-12~~
 - ~~STEM K-12~~
- The Post Baccalaureate Certificate in Teacher Education and the Master of Education in Teaching elementary and secondary programs to offer the following initial license fields:
 - STEM K-6
 - STEM 6-12
 - STEM K-12

The HTSB Executive Director or her designee will work with the program to complete the reviews. Reports for review must be submitted within two years of acceptance of the Letter of Intent and the review must be conducted within three months of submission of the report to HTSB staff.

The program may not advertise these programs as Hawaii licensure programs until such time that Provisional Approval is granted by the HTSB.

Rationale/Background: Due to the COVID-19 pandemic, the planning of UH Manoa's Post Baccalaureate Certificate in Teacher Education and the Master of Education in Teaching elementary and secondary programs in STEM was impacted. The attached documents are the updated revisions to the program and program implementation.

The STEMS² program was granted provisional approval on April 16, 2021, with [NBI 20-35](#).

Submitted by: Branden Kawazoe

Referred to: Teacher Education Committee



UNIVERSITY
of HAWAII®
MĀNOA

College of Education
Office of the Dean

November 2, 2022

Felicia Villalobos
Hawai'i Teacher Standard Board
650 Iwilei Road, Suite 201
Honolulu, HI. 96817

Dear Ms. Felicia Villalobos,

The College of Education, University of Hawai'i at Mānoa is requesting that the Hawai'i Teacher Standards Board approve the Letter of Intent for the School of Teacher Education (STE) to provide programs for initial licensure in Science, Technology, Engineering, and Mathematics (STEM) at a specified level (K-6, 6-12, K-12). Two programs will be offered through the STE for initial licensure in STEM: (a) Post-Baccalaureate Certificate in Teacher Education (PBCTE) and (b) Master of Education in Teaching (MEdT). The PBCTE is a 3-semester, 30 credit program and the MEdT is a 4-semester, 46-credit program. These programs will offer direct pathways for individuals pursuing licensure in STEM. The initial 'Letter of Intent' was submitted and approved on November 13, 2020 (NBI 20-12). Due to the COVID-19 pandemic, progress towards development of this program had been impacted. Thank you for your consideration.

Should you have any questions, please contact Cecily Ornelles, Interim Associate Dean for Academic Affairs, at (808)956-4278/7704 or by email at cecily@hawaii.edu.

Sincerely,

A handwritten signature in black ink that reads 'Cecily Ornelles'.

Cecily Ornelles
Interim Associate Dean for Academic Affairs

Attachments:

1. STE Letter of Intent for Initial Licensure in STEM
2. Program Organization and Justification

1776 University Avenue
Everly Hall, Room 128
Honolulu, Hawai'i 96822
Tel: (808) 956-7703 • Fax: (808) 956-3106
An Equal Opportunity/Affirmative Action Institution



HAWAI'I TEACHER
STANDARDS BOARD

**Letter of Intent to Develop Hawaii State Approved Education
Preparation Provider**

1. CONTACT AND CONTEXT INFORMATION

EPP name and address

Name	
Address	
URL	

EPP administrator

Name	
Title	
Email address	
Telephone number	
National Accreditation Body and Dates of Accreditation (If applicable)	

SATEP Administrator, if different from EPP Administrator

Name	
Title	
Email address	
Telephone number	

Name of new program or field(s) to be included

Name of Program	License Field(s)	License Level(s)	Projected Implementation Date

Ex. Master's of Education

STEM

6-12, 6-8

7/1/2018

2. PROGRAM ORGANIZATION AND JUSTIFICATION

If this is a new program, attach an organizational chart of your institution/agency and, if applicable, college/school/department showing the placement of this program.

Justification for implementing the program. Summarize the current market for this program's completer employment outlook and any other contexts that shape the program.

3. SIGNATURES

Administrators	Enter Title and Typed Name	Signature	Date
EPP Head		<i>Nathan M Murata</i>	
Program Head		<i>Jon Goshioka</i>	11.07.22
Program Contact		<i>Jon Goshioka</i>	11.07.22

2. PROGRAM ORGANIZATION AND JUSTIFICATION

Please see the following pages for an organizational chart for the University of Hawai‘i at Mānoa and for the College of Education (COE). The School of Teacher Education (STE), which will house the proposed programs (a) Post -Baccalaureate Certificate in Teacher Education (PBCTE) and (b) Master of Education in Teaching (MEdT) with initial licensure in STEM at the elementary and secondary levels is represented on p. 6 of the COE organizational chart.

This Letter of Intent is to request approval to plan for initial licensure in Science Technology Engineering and Mathematics (STEM) at these levels K-6, 6-12, K-12. Two licensure programs will be offered through the School of Teacher Education (STE): (a) Post-Baccalaureate Certificate in Teacher Education (PBCTE) and (b) Master of Education in Teaching (MEdT) at the elementary and secondary levels. These two programs offer a direct pathway for initial licensure in STEM. The Post-Baccalaureate Certificate program is a 3 semester 30-credit program and the MEdT is a 4 semester, 46-credit program. Individuals in the PBCTE program will complete course and field requirements for the initial license in STEM while those in the MEdT program will obtain initial licensure in STEM and also complete the MEd degree. Coursework and fieldwork completed will determine the level of licensure obtained in both of these programs.

The College of Education will expand program offerings for teacher candidates who seek licensure in STEM and this will contribute to the teacher workforce in Hawai‘i. These teacher licensure programs are designed for educators who want to be transformative, connect with the community, actively engage students through experiential learning, transcend disciplinary boundaries, and gain leadership skills that emphasize respect and collaboration. Preservice course and fieldwork focus on real-world problem solving via project-based and place-based learning within a social context that integrates science, technology, engineering, mathematics and the social sciences while focusing on teacher and youth development in relation to their sense of self as local and global citizens. Candidates will be prepared to support and engage their students through emulating the processes of professionals in a variety of fields (i.e., historians, engineers, etc.) to design solutions to real world problems in their local and global communities.

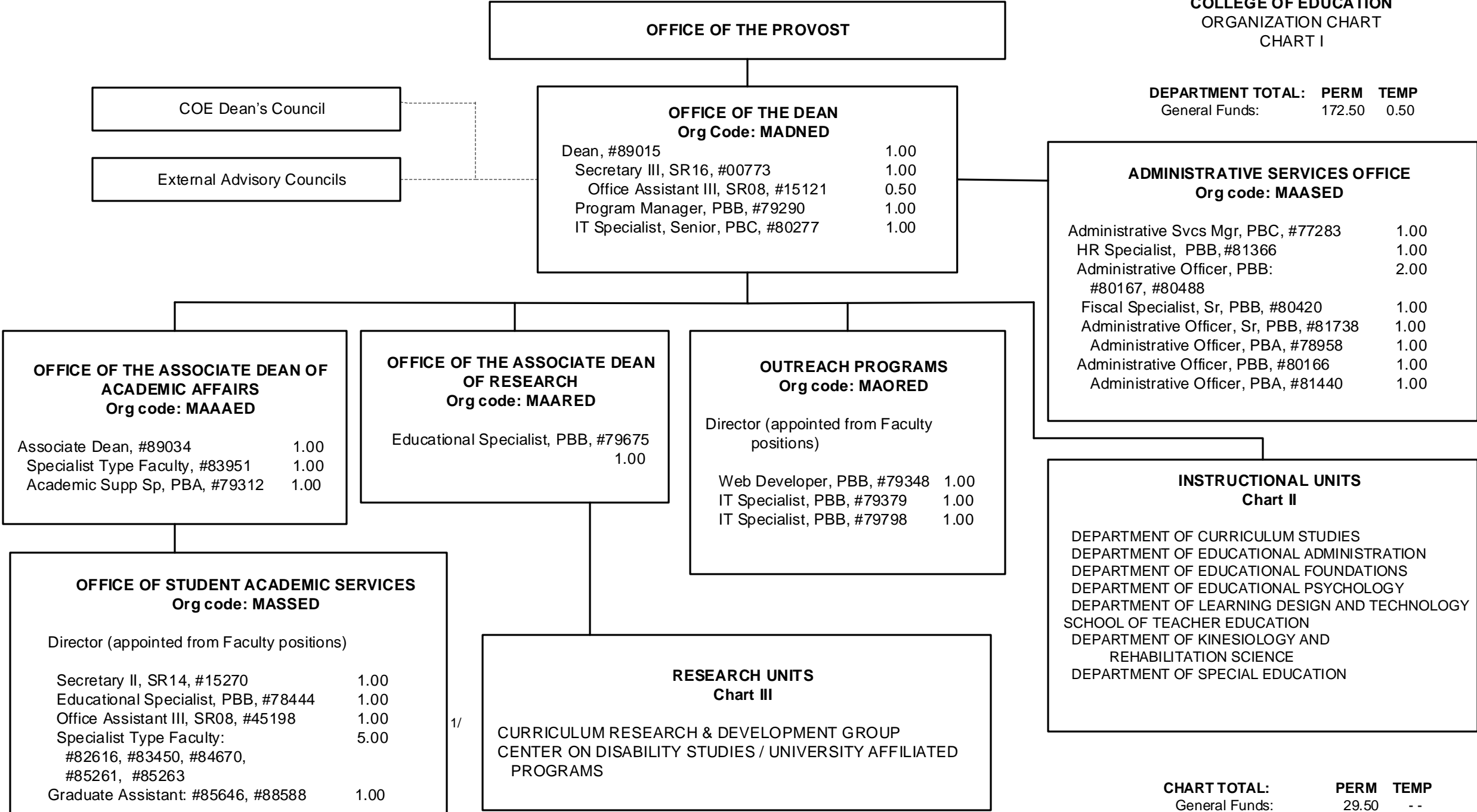
Graduates of the PBCTE and MEdT programs will be prepared to enter a diverse array of professional fields including teaching and school leadership positions with the Hawai‘i Department of Education (HIDOE) public and public charter schools. HIDOE schools have expressed commitment to implement ‘āina-based, experiential, place-based and interdisciplinary science and STEM instruction (DOE 2030 Promise Plan: <https://www.hawaiipublicschools.org/VisionForSuccess/AdvancingEducation/StrategicPlan/Pages/Phase-I.aspx>). Thus, this will require that there are teachers prepared with this specific training. The Economic Policy Institute (2019) reported a growing teacher shortage with high-need fields in STEM in schools that serve low-income students (Wiggan, et al., 2021; Wright, et al., 2019). This program will address the need for trained, qualified and licensed teachers who have the specific training and expertise in STEM.

Wiggan, G., Smith, D. , Watson-Vandiver, M.J. (2021). The national teacher shortage, urban education and cognitive sociology of labor, *The Urban Review*, 53, 43-75.
<https://doi.org/10.1007/s11256-020-00565-z>

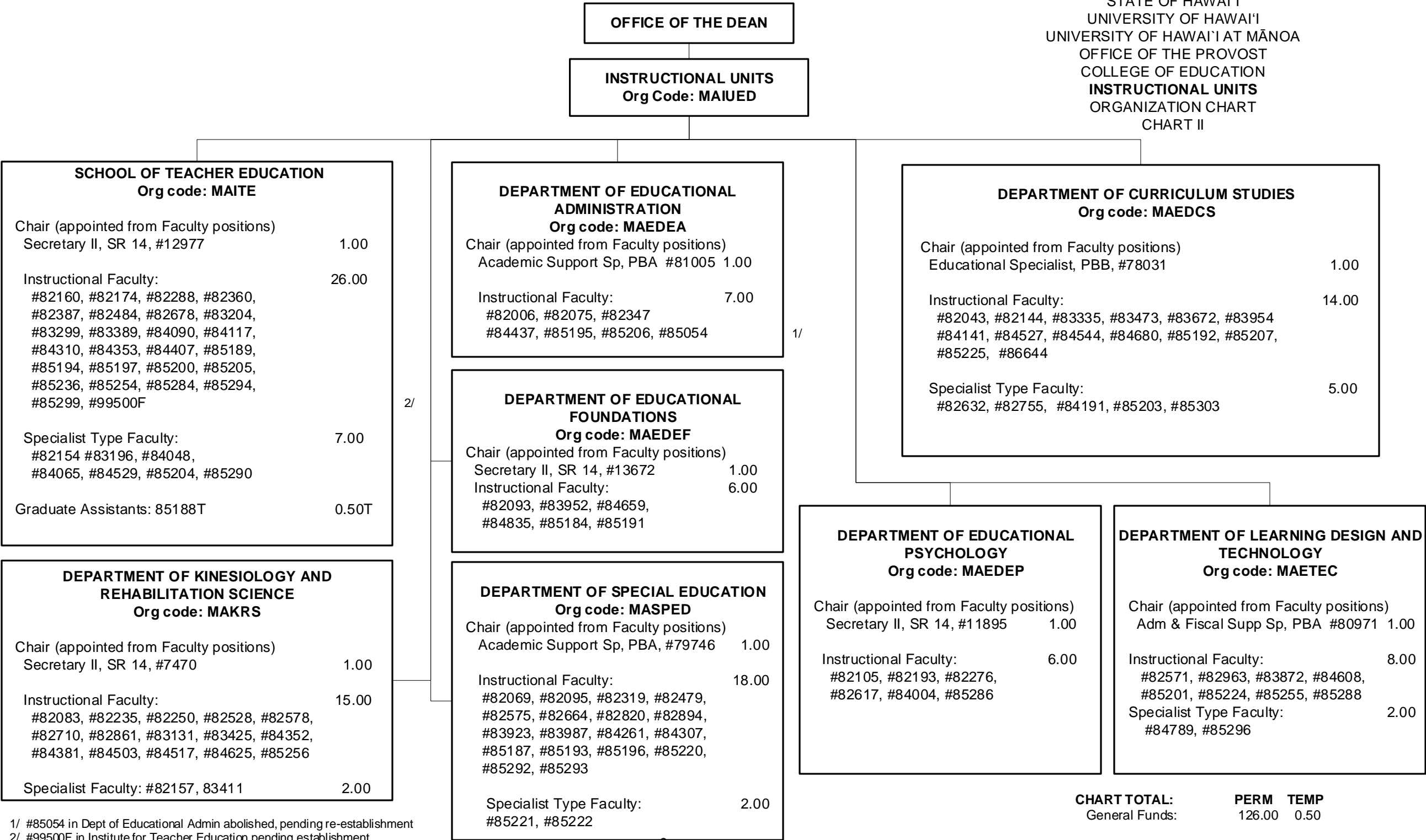
Wright, D.S., Balgopal, M., Sample McMeeking, L. B., & Weinberg, A.E. (2019). Developing resilient K-12 STEM teachers, *Advances in Developing Human Resources*, 21(1), 16-34.
<https://doi.org/10.1177/1523422318814>

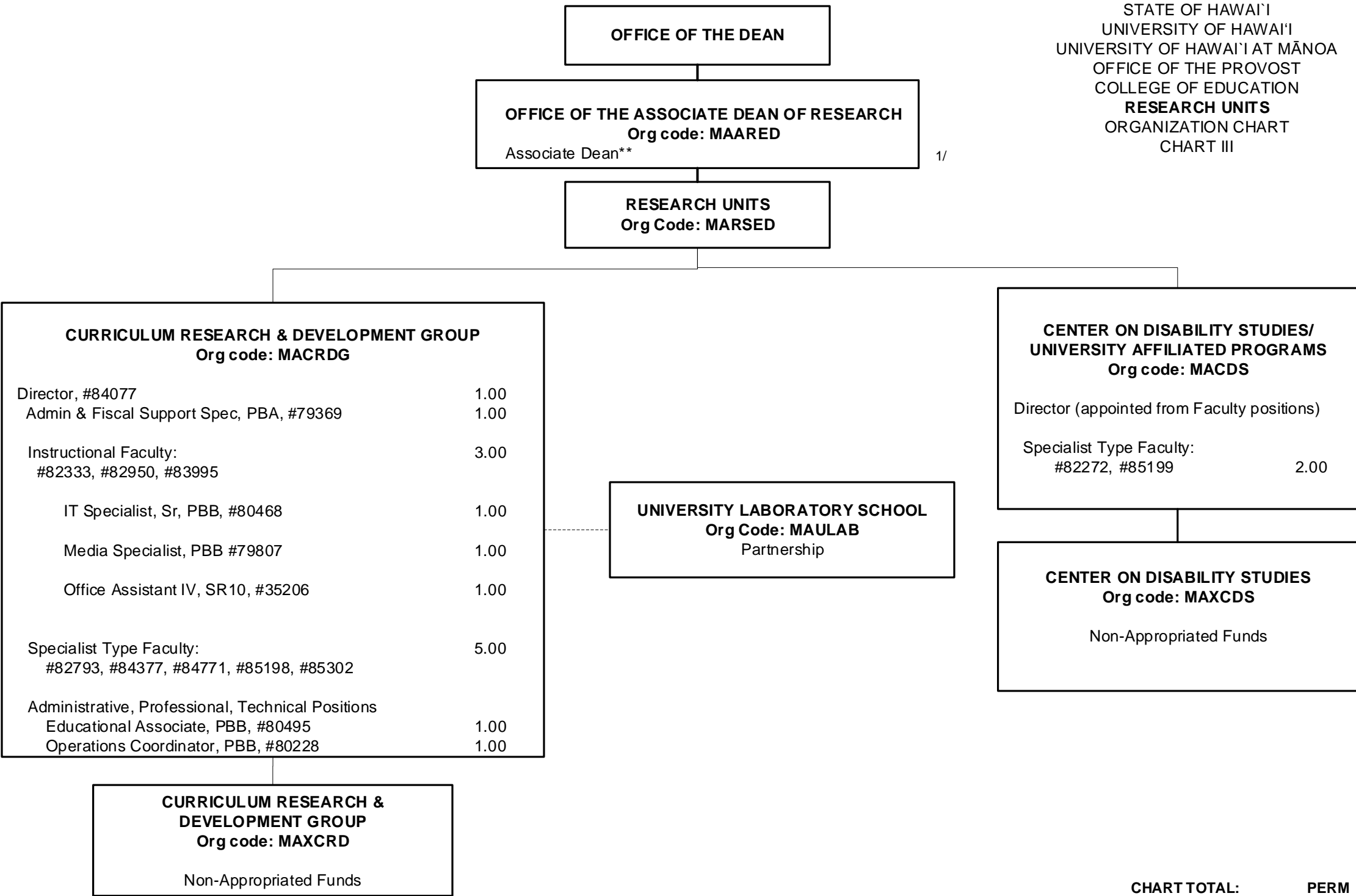
The following nine pages provide organizational charts with a description of the institution.

STATE OF HAWAI'I
UNIVERSITY OF HAWAI'I
UNIVERSITY OF HAWAI'I AT MĀNOA
OFFICE OF THE PROVOST
COLLEGE OF EDUCATION
ORGANIZATION CHART
CHART I



1/ #45198 abolished, pending re-establishment, used with postion #15121 - .25% FTE





1/ Pending establishment of the Associate Dean

STATE OF HAWAII
UNIVERSITY OF HAWAII
UNIVERSITY OF HAWAII AT MANOA
OFFICE OF THE PROVOST
COLLEGE OF EDUCATION

FUNCTIONAL STATEMENT

OFFICE OF THE DEAN – Org Code: MADNED

The College of Education (COE) consists of educators who provide innovative and cutting-edge research and teaching in an effort to further the field of education, and to prepare educators and leaders in Hawai'i for future careers in teaching and leadership positions. Working in partnership with Hawai'i's Department of Education, Hawai'i Teachers Standards Board and private schools, the College of Education provides professional development and licensure opportunities for educators as well as prepares researchers and professionals for fields beyond Pre/K-12 education and in non-school settings.

The Office of the Dean directs, plans, coordinates, and supports the various departments and units within the College of Education in instruction, organized research, budget management, program and fiscal management, staff supervision, computer technology, community relations, grievance and litigation, travel, student services, and outreach programs.

Advisory Groups to the Dean:

COE Dean's Council: This group is comprised of COE Directors and Chairs and Dean's staff who advises the Dean in administrative, academic, and operational matters.

External Advisory Councils: These groups are comprised of educational constituents comprised of business, government and academic representatives who advise and work with the Dean on various academic and educational issues. These groups comprise of the Hawai'i State Teacher Standards Board (HTSB), Teacher Education Coordinating Committee (TECC), the Business Roundtable and others.

ADMINISTRATIVE SERVICES OFFICE – Org code: MAASED

In conjunction with the Dean, this office advises, manages, and administers:

- a. Budget development, allocation, and administration
- b. Accounting for resources
- c. Procurement and property management
- d. Personnel
- e. Other logistical support services

OFFICE OF THE ASSOCIATE DEAN OF ACADEMIC AFFAIRS–Org Code: MAAAED

Under the direction of the Dean, this office is responsible for planning, organizing, and administering:

- a. Academic program/course development, approval and evaluation
- b. Professional development for faculty and staff
- c. Facilities
- d. Assessment, accreditation and accountability
- e. Student academic services

Office of Student Academic Services – Org code: MASSED

Under the guidelines of the Associate Dean for Academic Affairs:

- a. Administers the functions of recruitment, application, selection, and admission of undergraduate and teacher licensure students and maintains accurate student records.
- b. Provides advising services, career guidance, and placement services to all students in the College.
- c. Conducts institutional research studies for program planning.

OUTREACH PROGRAMS – Org code: MAORED

Working with the Dean, this office plans, organizes, and implements:

- a. Delivery of College programs to the neighbor islands, remote areas on Oahu and other service areas via a mix of distance education initiatives and traditional delivery services which includes on-line programs and services
- b. Partnerships with appropriate educational agencies to support students at a distance.
- c. Professional development activities/programs for College faculty to infuse appropriate learning technologies throughout College programs
- d. College Collaboration Center oversight
- e. Manages and provides the College of Education with technical assistance in the areas of computer and classroom equipment, software, and student needs and requirements
- f. Works with other UH departments and external clients on mutually advantageous technological opportunities.

STATE OF HAWAII
UNIVERSITY OF HAWAII
UNIVERSITY OF HAWAII AT MANOA
OFFICE OF THE PROVOST
COLLEGE OF EDUCATION
INSTRUCTIONAL UNITS

FUNCTIONAL STATEMENT

INSTRUCTIONAL UNITS – Org Code: MAIUED

Under the direction of the Dean, listed are the departments.

Department of Curriculum Studies – Org code: MAEDCS

- a. Provides graduate-level programs leading to M.Ed. in curriculum studies, Ph.D. specialization in curriculum and instruction, and M.Ed. in early childhood education.
- b. Provides instruction to support teacher preparation programs.

Department of Educational Administration – Org code: MAEDEA

- a. Provides graduate-level programs leading to M.Ed. in educational administration and Ph.D. specializations in educational administration and educational policy studies (jointly with Educational Foundations).
- b. Provides programs to prepare educational administrators and supervisors for administrative positions in K-12 and higher education.

Department of Educational Foundations – Org code: MAEDEF

- a. Provides graduate-level programs leading to M.Ed. in educational foundations and Ph.D. specializations in educational foundations, global and international education, and educational policy studies (jointly with Educational Administration).
- b. Provides instruction in educational foundations to support teacher preparation programs.

Department of Educational Psychology – Org code: MAEDEP

- a. Provides graduate-level programs leading to M.Ed. and Ph.D. in educational psychology to prepare individuals to conduct basic or applied research and evaluation in public and private educational settings.
- b. Provides instruction in educational psychology to support teacher preparation programs.

Department of Learning Design and Technology – Org code: MAETEC

- a. Provides graduate-level programs leading to M.Ed. and Ph.D. in learning design and technology to prepare individuals to optimize opportunities for learning of and through diverse technologies and media.
- b. Provides instruction in learning design and technology to support teacher preparation programs.

School of Teacher Education - Org code: MAITE

Provides teacher preparation and initial licensure programs as follows:

- a. Bachelor of Elementary Education (BEd)
- b. Bachelor of Secondary Education (BEd)
- c. Bachelor of Science in Health and Physical Education (BS)
- d. Post-baccalaureate Certificate in Secondary Education (PBCSE)
- e. Master of Education in Teaching (MEdT)

Department of Kinesiology and Rehabilitation Science - Org code: MAKRS

Provides undergraduate- and graduate-level programs as follows:

- a. Bachelor of Science (BS)
- b. Master of Science (MS) in Athletic Training
- c. Master of Science (MS) in Kinesiology and Rehabilitation Science
- d. PhD specialization in Kinesiology

Department of Special Education - Org code: MASPED

Provides undergraduate- and graduate-level programs to provide identification, assessment, and intervention strategies for persons with disabilities as follows:

- a. Post-baccalaureate Certificate in Special Education (PBSPED)
- b. Master of Education (MEd) in Special Education (Emphasis in mild/moderate disabilities or severe disabilities/autism)
- c. PhD Specialization in Exceptionalities

Provides undergraduate and graduate instruction in special education to support teacher preparation programs

Instructional units also:

- a. Provide professional development (e.g., courses, workshops, consultations) to assist education professionals in maintaining currency of knowledge, research, and practice in their fields.
- b. Share in development of program policy, curriculum, standards, and evaluation.
- c. Facilitate research and training related to teaching and learning.

STATE OF HAWAII
UNIVERSITY OF HAWAII
UNIVERSITY OF HAWAII AT MANOA
OFFICE OF THE PROVOST
COLLEGE OF EDUCATION
RESEARCH UNITS

FUNCTIONAL STATEMENT

OFFICE OF THE ASSOCIATE DEAN OF RESEARCH – Org Code: MAARED

Under the direction of the Dean, this office is responsible for planning, organizing, and administering:

- a. Grant development, writing, and administration
- b. Coordination between academic programs and research projects
- c. Review of research units
- d. Conducts institutional research studies for program planning
- e. Tracks legislative initiatives that influence the College

RESEARCH UNITS – Org Code: MARSED

Curriculum Research & Development Group – Org code: MACRDG

- a. Conducts research and designs and tests more adequate models for educational programs.
- b. Serves the State school system in its programs of curriculum and student and teacher materials.
- c. Evaluates promising curriculum innovations and disseminates the information to schools.
- d. Provides a research base, including a laboratory school, for a variety of educational research and development programs.
- e. Conducts research on the process of curriculum and school change.

University Laboratory School – Org Code: MAULAB

The University Laboratory School is a public charter school that operates in partnership with the UHM Curriculum Research and Develop Group under an agreement with its Local School Board. The school serves as an experimental site for researching and developing innovation in teaching, learning, and assessment in grades K-12.

Curriculum Research & Development Group – Non-appropriated funds – Org Code: MAXCRD

The CRDG receives many extramural projects to meet the goals as stated above.

Center on Disability Studies/University Affiliated Programs - Org code: MACDS

Supports the quality of life, community inclusion, and self-determination of all persons with disabilities and their families by:

- a. Providing interdisciplinary training and student mentorship, through targeted course-work and certificate programs at the undergraduate and graduate levels,

- b. Conducting interdisciplinary research, demonstration, evaluation projects impacting upon policy, procedure and practice across special health, human service and education disciplines,
- c. Conducting interdisciplinary community and university service activities which result in an improved quality of life for persons with special health, human service and education needs,
- d. Developing research products, training materials, and media software/video formats,
- e. Planning and conducting interdisciplinary national and regional conferences, institutes, and forums,
- f. Disseminating information regarding research-based practices in the State of Hawai'i, the Pacific Region, the U.S. mainland, and internationally.

Center on Disability Studies – Non-appropriated funds – Org Code: MAXCDS

The CDS receives many extramural projects and funding to meet the goals of the Center as stated above.