

New Business Item 20-15 Revised

Introduced November 13, 2020

Approved November 13, 2020

Reintroduced November 18, 2022

Approved November 18, 2022

TITLE: Consideration of the University of Hawaii at Manoa's Letter of Intent to Plan a New Program in School Counseling

The Hawaii Teacher Standards Board accepts the Letter of Intent from the College of Education at the University of Hawaii at Manoa to plan a new program in School Counseling.

The program's plans will address initial and added field licensure for the following license fields:

- The Master of Education Degree in School Counseling in the following initial and added field license fields:
 - School Counselor K-6
 - School Counselor 6-12
 - School Counselor K-12

The HTSB Executive Director or her designee will work with the program to complete the reviews. Reports for review must be submitted within two years of acceptance of the Letter of Intent and the review must be conducted within three months of submission of the report to HTSB staff.

The program may not advertise these programs as Hawaii licensure programs until such time that Provisional Approval is granted by the HTSB.

Rationale:

Due to COVID-19 pandemic, the planning of UH Manoa's School Counseling Program was impacted. The attached documents are the updated revisions to the program and program implementation.

Submitted by: Branden Kawazoe

Referred to: Teacher Education Committee



UNIVERSITY
of HAWAII®
MĀNOA

November 2, 2022

Felicia Villalobos
Hawai'i Teacher Standard Board
650 Iwilei Road, Suite 201
Honolulu, HI. 96817

Dear Ms. Felicia Villalobos,

The College of Education, University of Hawai'i at Mānoa (UHM) is requesting that the Hawai'i Teacher Standards Board approve the Letter of Intent for the Department of Kinesiology and Rehabilitation Science (KRS) to provide a 3-year, 48-credit, graduate program to prepare school counselors. The Master of Education in School Counseling degree will be offered as an online program and available to candidates throughout the State of Hawai'i. The initial 'Letter of Intent' was submitted and approved on November 13, 2020 (NBI 2015). This program was recently approved by the UHM Board of Regents in October, and UHM faculty are currently finalizing a proposal for review by the Hawai'i Teacher Standards Board. Due to the COVID-19 pandemic, progress towards development of this program had been impacted. Thank you for your consideration.

Should you have any questions, please contact Cecily Ornelles, Interim Associate Dean for Academic Affairs, at (808)956-4278/7704 or by email at cecily@hawaii.edu.

Sincerely,

A handwritten signature in cursive script that reads 'Cecily Ornelles'.

Cecily Ornelles
Interim Associate Dean for Academic Affairs

Attachments:

1. MEd in School Counseling Letter of Intent
2. Program Organization and Justification



**HAWAI'I TEACHER
STANDARDS BOARD**

**Letter of Intent to Develop Hawaii State Approved Education
Preparation Provider**

1. CONTACT AND CONTEXT INFORMATION

EPP name and address

Name	University of Hawaii - Manoa, College of Education
Address	Everly Hall, Dean's Office, 1776 University Ave, Honolulu, HI 96822
URL	https://coe.hawaii.edu/

EPP administrator

Name	Nathan Murata
Title	Dean
Email address	nmurata@hawaii.edu
Telephone number	808-956-7704
National Accreditation Body and Dates of Accreditation (If applicable)	

SATEP Administrator, if different from EPP Administrator

Name	Judith Daniels
Title	Professor
Email address	jdaniels@hawaii.edu
Telephone number	808-956-5162

Name of new program or field(s) to be included

Name of Program	License Field(s)	License Level(s)	Projected Implementation Date
Master of Education in School Counseling	School Counseling	K-12	8/1/2023

Ex. Master's of Education

STEM

6-12, 6-8

7/1/2018

2. PROGRAM ORGANIZATION AND JUSTIFICATION

If this is a new program, attach an organizational chart of your institution/agency and, if applicable, college/school/department showing the placement of this program.

Justification for implementing the program. Summarize the current market for this program's completer employment outlook and any other contexts that shape the program.

3. SIGNATURES

Administrators	Enter Title and Typed Name	Signature	Date
EPP Head	Nathan Murata, Dean	<i>Nathan M Murata</i>	11/03/22
Program Head	Christopher Stickley, Chair Department of Kinesiology and Rehabilitation Science	<i>Chris Stickley</i>	11/2/22
Program Contact	Judith Daniels, Professor	<i>Judith Daniels</i>	11/02/2022

2. PROGRAM ORGANIZATION AND JUSTIFICATION

Please see the following pages for an organizational chart for the University of Hawai‘i at Mānoa and for the College of Education (COE). The Master of Education in School Counseling will be offered through the Department of Kinesiology and Rehabilitation Science. This unit is represented on the COE organizational chart on p. 6.

Needs Statement and Justification

There has been an immediate and ongoing need to address the mental and emotional health of youth nationally and within the state of Hawai‘i. The US Surgeon General, Vivek Murthy stated, “The COVID-19 pandemic further altered their experiences at home, school, and in the community, and the effect on their mental health has been devastating. The future wellbeing of our country depends on how we support and invest in the next generation” ([US Surgeon General Issues Advisory on Youth Mental Health Crisis Further Exposed by COVID-19 Pandemic | HHS.gov](#)). Nationally, behavioral and mental health issues for our youth are on the rise, including depression and anxiety (CDC - [Data and Statistics on Children's Mental Health](#)) with 59% of youth experiencing major depression and not receiving needed mental health treatment ([Mental Health in America - Youth Data](#)).

Hawai‘i’s data on the mental health needs of youth mirrors national data. In Hawai‘i, 58% or about 6,000 youth with major depression do not receive any mental health services. Since the start of the pandemic, it has gotten worse. In March 2020, the Hawai‘i Child and Adolescent Mental Health Division (CAMHD), Hawaii Early Intervention Section (EIS), and Hawaii Child Welfare Services (CWS) all reported that youth and their families were not receiving or accessing needed services. The Hawai‘i Youth Risk Behavior Survey (2019) revealed:

- 11% of the high school youth surveyed in Hawai‘i attempted suicide
- 56% of high school students who reported feeling sad, empty, hopeless, angry, or anxious indicated that they never or rarely got the kind of help they needed
- 35% of high school students reported feeling sad or hopeless almost every day for two or more weeks in a row during the 12 months before the survey. [Youth Online: High School YRBS - United States 2019 Results | DASH | CDC](#)

The COVID pandemic has affected the mental health needs of school-aged children and the population at-large. The Hawaii Crisis Text Line reported a 54% increase in use since March 2020, which marked the beginning of major restrictions in Hawai‘i due to the pandemic (<https://health.hawaii.gov/camhd/files/2020/06/Youth-Service-Data-200615.pdf>).

Program Overview

This ‘Intent to Plan’ is for a Master of Education in School Counseling in the Department of Kinesiology and Rehabilitation Science (KRS) at the University of Hawai‘i at Manoa. Currently, the University of Hawai‘i System does not offer a school counseling licensure program. The MEd in School Counseling will be offered as a completely online program and will provide a cost-efficient, quality graduate education program to candidates statewide. This program will address the significant need for trained, qualified and licensed school counselors

throughout the State of Hawai‘i. This 3-year, 48-credit program closely aligns with the KRS Rehabilitation Counseling in Education Program (RCEP) and utilizes shared resources. This MEd School Counseling program will aim to fill school counseling positions with licensed school counselors in the Hawai‘i Department of Education. National and state data support the current market and employment outlook for this school counseling proposal.

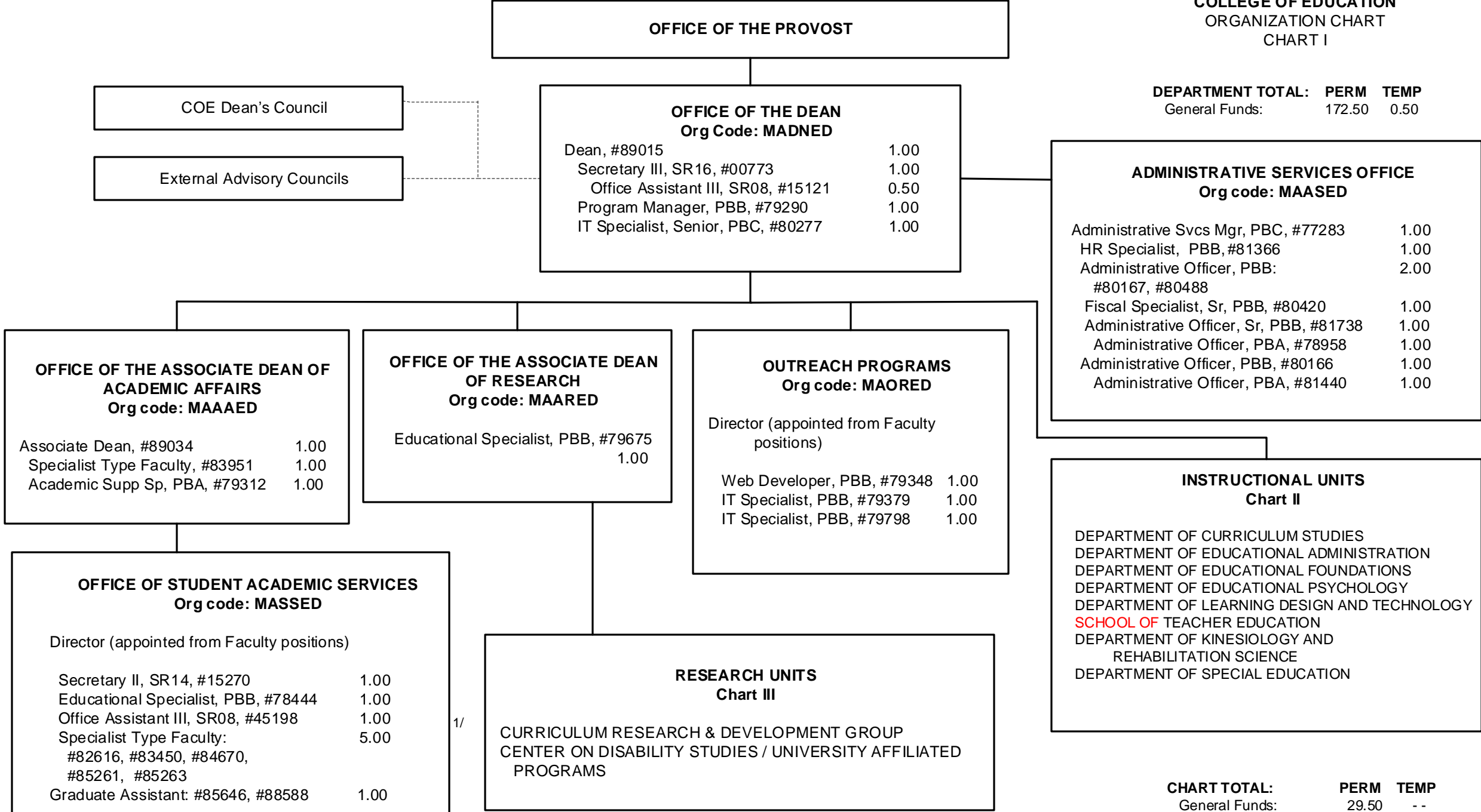
- Nationally:
 - U.S. Bureau of Labor Statistics, school counseling as a profession has a national employment projected growth rate of 11% between 2020- 2030, faster than the average of all other occupations with a projection of about 35,000 openings each year on average, over the next 10 years.
 - Nationally, most colleges of education within public universities offer a graduate school counseling program as part of their service commitment to K-12 schools. Currently, there are no programs that provide licensure for the specialty area of School Counseling in the University of Hawai‘i System.
- Locally:
 - A steady pipeline into the profession is needed so the Hawai‘i Department of Education (HIDOE) can provide students with access to certified counselors who will provide critical counseling services and mental health care.

The following is information from the HTSB School Counseling Workgroup Report 2020-2021

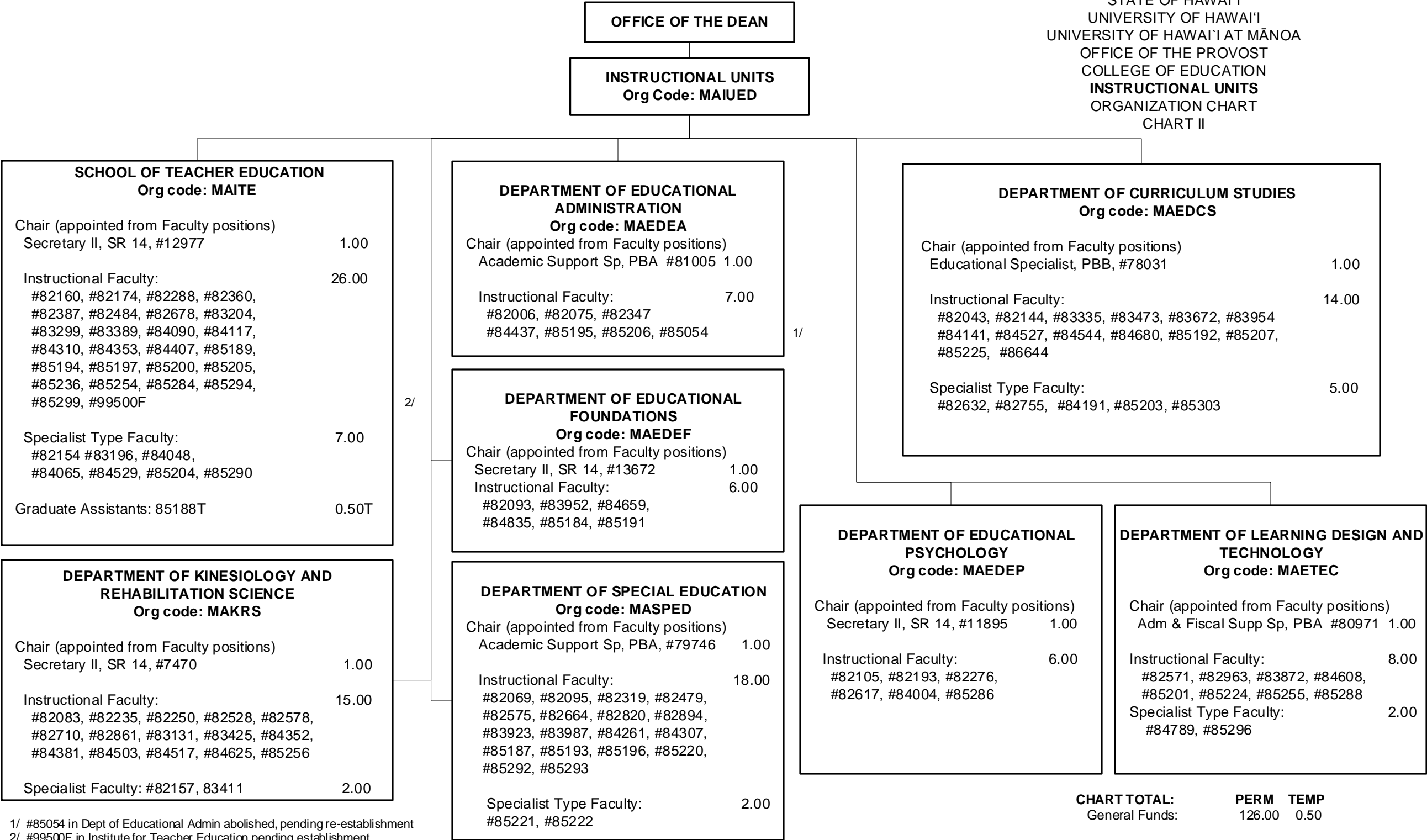
- Indicated that approximately 45 practicing counselors were unlicensed in the field of School Counseling and indicated a need to offer a high-quality school counseling program statewide.
- The one state approved school counseling preparation program in Hawai‘i (Chaminade) cannot prepare enough school counselors to meet the state’s needs, especially with extending outreach to neighbor islands.
- The issues that students and families are facing now are more complex than ever and require specialized knowledge. School counselors provide an essential resource to address the social, emotional, and academic needs of youth in the schools.

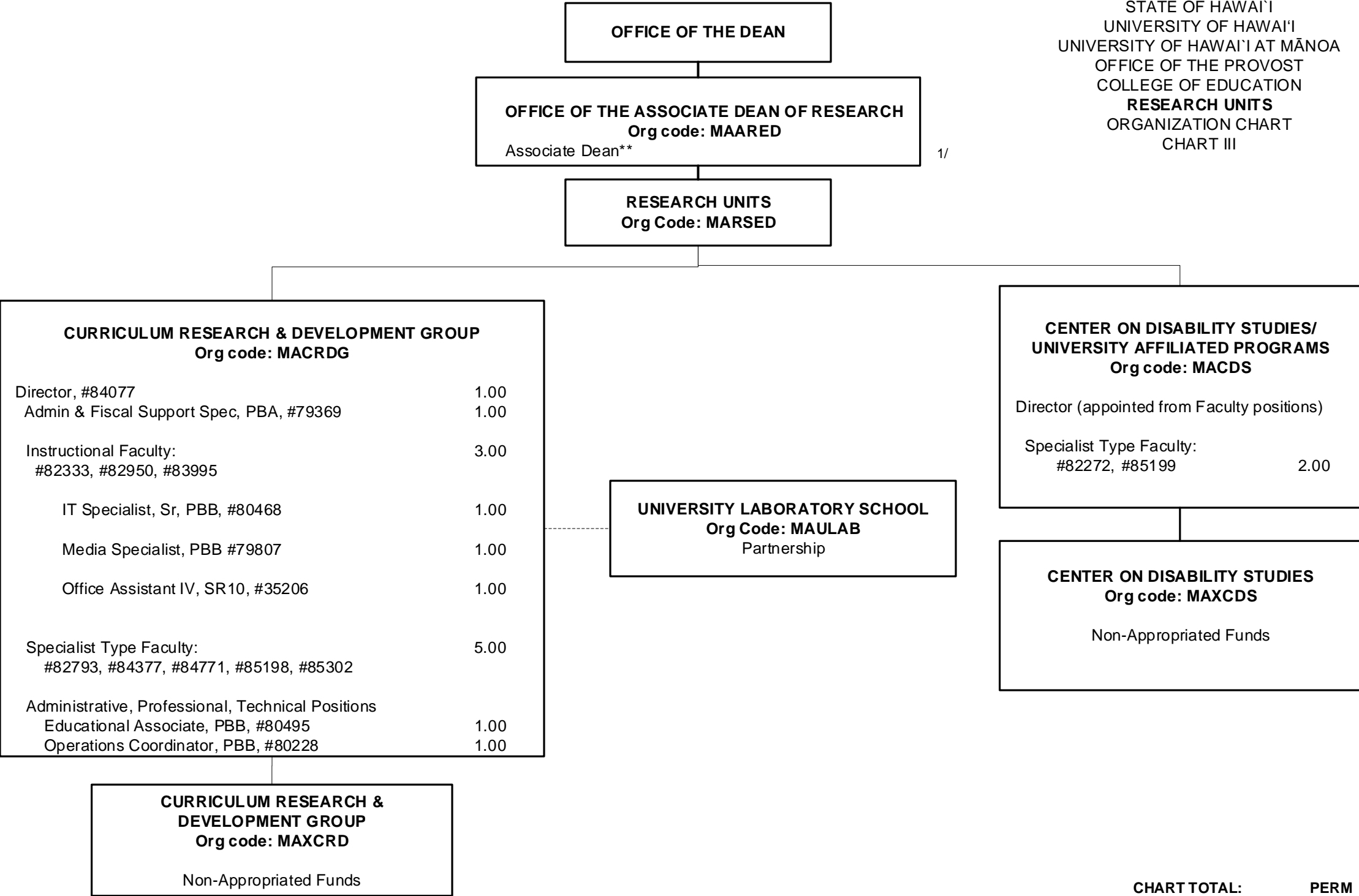
School counselors play a vital role in addressing the health and well-being of our youth in the State of Hawai‘i. The proposed MEd in School Counseling program will provide an opportunity for those living and working in our State of Hawai‘i, including outer islands and more rural and remote areas, to become licensed school counselors.

STATE OF HAWAI'I
UNIVERSITY OF HAWAI'I
UNIVERSITY OF HAWAI'I AT MĀNOA
OFFICE OF THE PROVOST
COLLEGE OF EDUCATION
ORGANIZATION CHART
CHART I



1/ #45198 abolished, pending re-establishment, used with postion #15121 - .25% FTE





1/ Pending establishment of the Associate Dean

STATE OF HAWAII
UNIVERSITY OF HAWAII
UNIVERSITY OF HAWAII AT MANOA
OFFICE OF THE PROVOST
COLLEGE OF EDUCATION

FUNCTIONAL STATEMENT

OFFICE OF THE DEAN – Org Code: MADNED

The College of Education (COE) consists of educators who provide innovative and cutting-edge research and teaching in an effort to further the field of education, and to prepare educators and leaders in Hawai'i for future careers in teaching and leadership positions. Working in partnership with Hawai'i's Department of Education, Hawai'i Teachers Standards Board and private schools, the College of Education provides professional development and licensure opportunities for educators as well as prepares researchers and professionals for fields beyond Pre/K-12 education and in non-school settings.

The Office of the Dean directs, plans, coordinates, and supports the various departments and units within the College of Education in instruction, organized research, budget management, program and fiscal management, staff supervision, computer technology, community relations, grievance and litigation, travel, student services, and outreach programs.

Advisory Groups to the Dean:

COE Dean's Council: This group is comprised of COE Directors and Chairs and Dean's staff who advises the Dean in administrative, academic, and operational matters.

External Advisory Councils: These groups are comprised of educational constituents comprised of business, government and academic representatives who advise and work with the Dean on various academic and educational issues. These groups comprise of the Hawai'i State Teacher Standards Board (HTSB), Teacher Education Coordinating Committee (TECC), the Business Roundtable and others.

ADMINISTRATIVE SERVICES OFFICE – Org code: MAASED

In conjunction with the Dean, this office advises, manages, and administers:

- a. Budget development, allocation, and administration
- b. Accounting for resources
- c. Procurement and property management
- d. Personnel
- e. Other logistical support services

OFFICE OF THE ASSOCIATE DEAN OF ACADEMIC AFFAIRS–Org Code: MAAAED

Under the direction of the Dean, this office is responsible for planning, organizing, and administering:

- a. Academic program/course development, approval and evaluation
- b. Professional development for faculty and staff
- c. Facilities
- d. Assessment, accreditation and accountability
- e. Student academic services

Office of Student Academic Services – Org code: MASSED

Under the guidelines of the Associate Dean for Academic Affairs:

- a. Administers the functions of recruitment, application, selection, and admission of undergraduate and teacher licensure students and maintains accurate student records.
- b. Provides advising services, career guidance, and placement services to all students in the College.
- c. Conducts institutional research studies for program planning.

OUTREACH PROGRAMS – Org code: MAORED

Working with the Dean, this office plans, organizes, and implements:

- a. Delivery of College programs to the neighbor islands, remote areas on Oahu and other service areas via a mix of distance education initiatives and traditional delivery services which includes on-line programs and services
- b. Partnerships with appropriate educational agencies to support students at a distance.
- c. Professional development activities/programs for College faculty to infuse appropriate learning technologies throughout College programs
- d. College Collaboration Center oversight
- e. Manages and provides the College of Education with technical assistance in the areas of computer and classroom equipment, software, and student needs and requirements
- f. Works with other UH departments and external clients on mutually advantageous technological opportunities.

STATE OF HAWAII
UNIVERSITY OF HAWAII
UNIVERSITY OF HAWAII AT MANOA
OFFICE OF THE PROVOST
COLLEGE OF EDUCATION
INSTRUCTIONAL UNITS

FUNCTIONAL STATEMENT

INSTRUCTIONAL UNITS – Org Code: MAIUED

Under the direction of the Dean, listed are the departments.

Department of Curriculum Studies – Org code: MAEDCS

- a. Provides graduate-level programs leading to M.Ed. in curriculum studies, Ph.D. specialization in curriculum and instruction, and M.Ed. in early childhood education.
- b. Provides instruction to support teacher preparation programs.

Department of Educational Administration – Org code: MAEDEA

- a. Provides graduate-level programs leading to M.Ed. in educational administration and Ph.D. specializations in educational administration and educational policy studies (jointly with Educational Foundations).
- b. Provides programs to prepare educational administrators and supervisors for administrative positions in K-12 and higher education.

Department of Educational Foundations – Org code: MAEDEF

- a. Provides graduate-level programs leading to M.Ed. in educational foundations and Ph.D. specializations in educational foundations, global and international education, and educational policy studies (jointly with Educational Administration).
- b. Provides instruction in educational foundations to support teacher preparation programs.

Department of Educational Psychology – Org code: MAEDEP

- a. Provides graduate-level programs leading to M.Ed. and Ph.D. in educational psychology to prepare individuals to conduct basic or applied research and evaluation in public and private educational settings.
- b. Provides instruction in educational psychology to support teacher preparation programs.

Department of Learning Design and Technology – Org code: MAETEC

- a. Provides graduate-level programs leading to M.Ed. and Ph.D. in learning design and technology to prepare individuals to optimize opportunities for learning of and through diverse technologies and media.
- b. Provides instruction in learning design and technology to support teacher preparation programs.

School of Teacher Education - Org code: MAITE

Provides teacher preparation and initial licensure programs as follows:

- a. Bachelor of Elementary Education (BEd)
- b. Bachelor of Secondary Education (BEd)
- c. Bachelor of Science in Health and Physical Education (BS)
- d. Post-baccalaureate Certificate in Secondary Education (PBCSE)
- e. Master of Education in Teaching (MEdT)

Department of Kinesiology and Rehabilitation Science - Org code: MAKRS

Provides undergraduate- and graduate-level programs as follows:

- a. Bachelor of Science (BS)
- b. Master of Science (MS) in Athletic Training
- c. Master of Science (MS) in Kinesiology and Rehabilitation Science
- d. PhD specialization in Kinesiology

Department of Special Education - Org code: MASPED

Provides undergraduate- and graduate-level programs to provide identification, assessment, and intervention strategies for persons with disabilities as follows:

- a. Post-baccalaureate Certificate in Special Education (PBSPED)
- b. Master of Education (MEd) in Special Education (Emphasis in mild/moderate disabilities or severe disabilities/autism)
- c. PhD Specialization in Exceptionalities

Provides undergraduate and graduate instruction in special education to support teacher preparation programs

Instructional units also:

- a. Provide professional development (e.g., courses, workshops, consultations) to assist education professionals in maintaining currency of knowledge, research, and practice in their fields.
- b. Share in development of program policy, curriculum, standards, and evaluation.
- c. Facilitate research and training related to teaching and learning.

STATE OF HAWAII
UNIVERSITY OF HAWAII
UNIVERSITY OF HAWAII AT MANOA
OFFICE OF THE PROVOST
COLLEGE OF EDUCATION
RESEARCH UNITS

FUNCTIONAL STATEMENT

OFFICE OF THE ASSOCIATE DEAN OF RESEARCH – Org Code: MAARED

Under the direction of the Dean, this office is responsible for planning, organizing, and administering:

- a. Grant development, writing, and administration
- b. Coordination between academic programs and research projects
- c. Review of research units
- d. Conducts institutional research studies for program planning
- e. Tracks legislative initiatives that influence the College

RESEARCH UNITS – Org Code: MARSED

Curriculum Research & Development Group – Org code: MACRDG

- a. Conducts research and designs and tests more adequate models for educational programs.
- b. Serves the State school system in its programs of curriculum and student and teacher materials.
- c. Evaluates promising curriculum innovations and disseminates the information to schools.
- d. Provides a research base, including a laboratory school, for a variety of educational research and development programs.
- e. Conducts research on the process of curriculum and school change.

University Laboratory School – Org Code: MAULAB

The University Laboratory School is a public charter school that operates in partnership with the UHM Curriculum Research and Develop Group under an agreement with its Local School Board. The school serves as an experimental site for researching and developing innovation in teaching, learning, and assessment in grades K-12.

Curriculum Research & Development Group – Non-appropriated funds – Org Code: MAXCRD

The CRDG receives many extramural projects to meet the goals as stated above.

Center on Disability Studies/University Affiliated Programs - Org code: MACDS

Supports the quality of life, community inclusion, and self-determination of all persons with disabilities and their families by:

- a. Providing interdisciplinary training and student mentorship, through targeted course-work and certificate programs at the undergraduate and graduate levels,

- b. Conducting interdisciplinary research, demonstration, evaluation projects impacting upon policy, procedure and practice across special health, human service and education disciplines,
- c. Conducting interdisciplinary community and university service activities which result in an improved quality of life for persons with special health, human service and education needs,
- d. Developing research products, training materials, and media software/video formats,
- e. Planning and conducting interdisciplinary national and regional conferences, institutes, and forums,
- f. Disseminating information regarding research-based practices in the State of Hawai'i, the Pacific Region, the U.S. mainland, and internationally.

Center on Disability Studies – Non-appropriated funds – Org Code: MAXCDS

The CDS receives many extramural projects and funding to meet the goals of the Center as stated above.